

PowerMonitor Guide

Table of contents

Get powerMonitor.....	1
Connect to PC.....	1
Install the corresponding driver.....	2
Open PowerMonitor.....	2
Select machine in PowerMonitor.....	3
Wait for a moment, PowerMonitor will work normally	4
Introduction of PowerMonitor.....	5

1, Get PowerMonitor

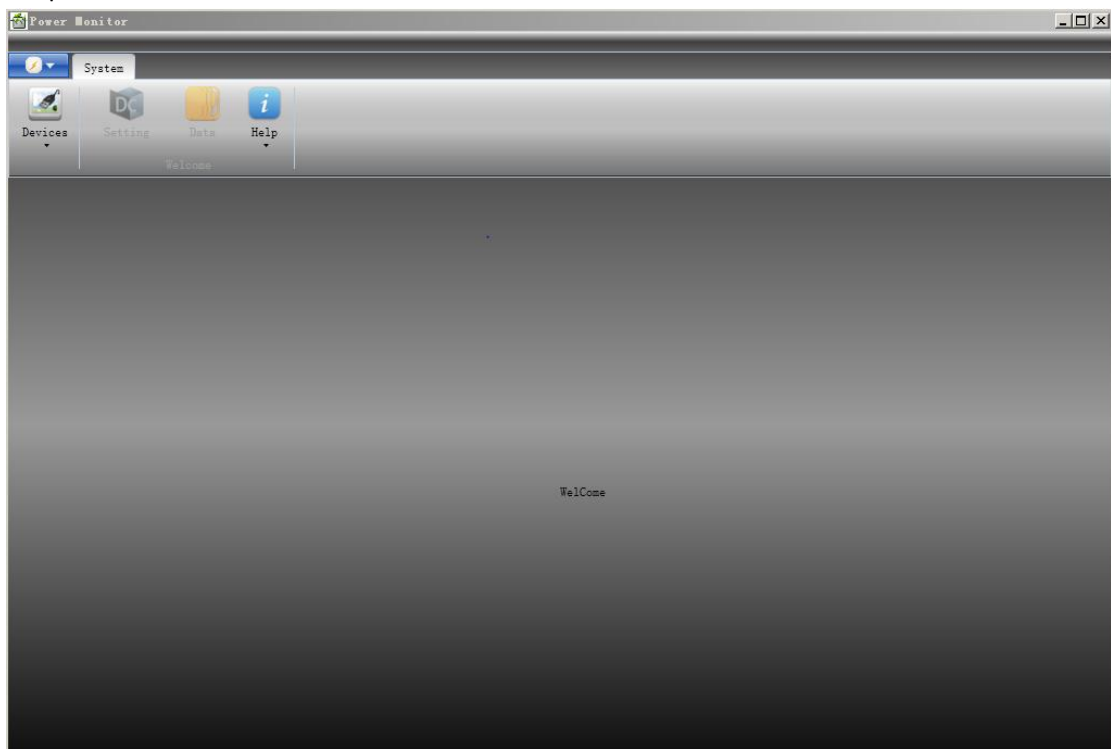


➤ Read it from CD-ROM

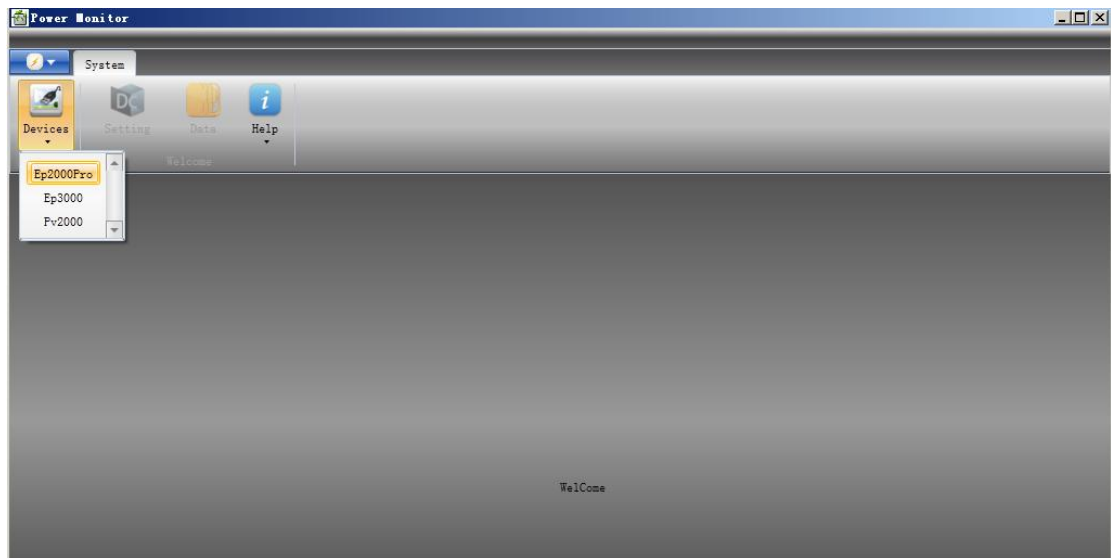
2, Connect to PC

3, Install the corresponding driver

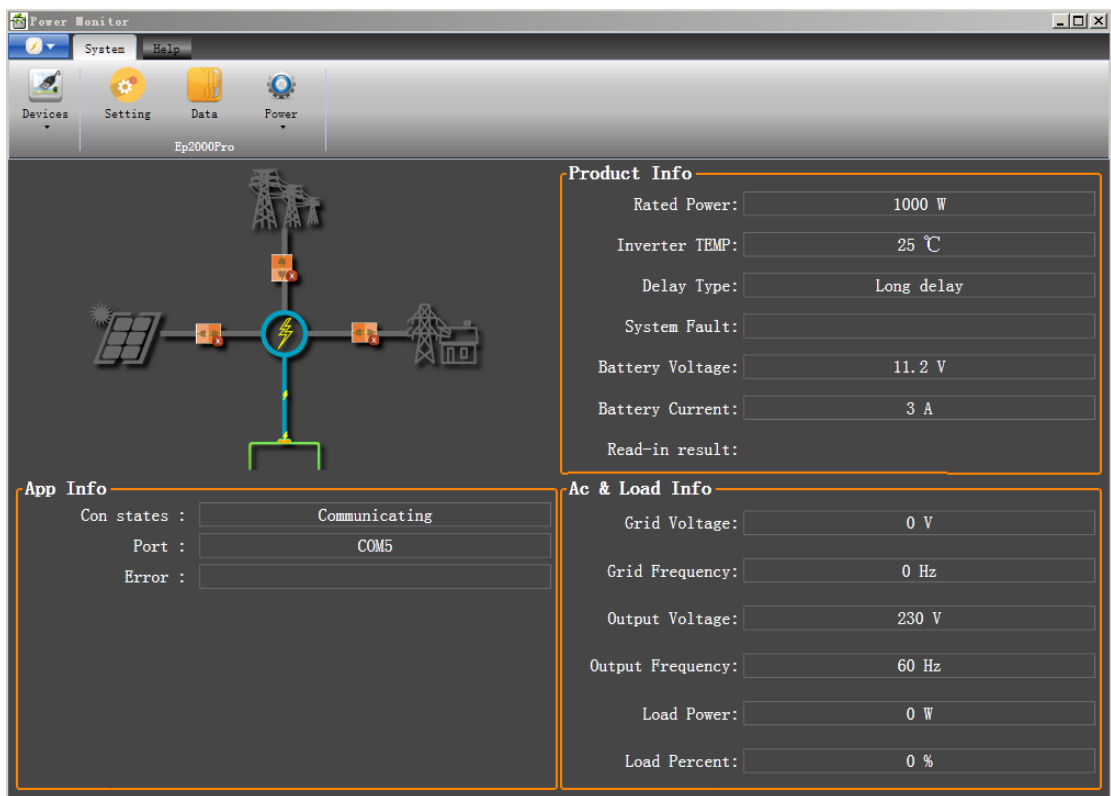
4, Open PowerMonitor



5, Select machine in PowerMonitor

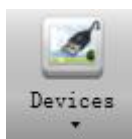


6, Wait for a moment, PowerMonitor will work normally.



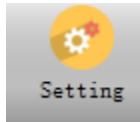
7, Introduction of PowerMonitor

7.1 Devices



According to your machine , Select the corresponding type.

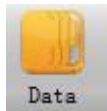
7.2 Settings



If you want to modify your parameter of machine, please enter to the menu.



7.3 Data

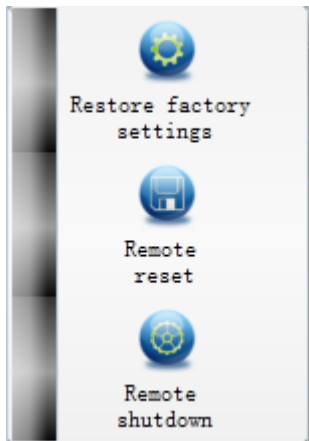


One record is saved every 5 minutes, and max records number is up to 60 thousands.

7.4 Power



In the menu, there are three function buttons.



In case, the button is clicked, all parameters of machine will be restored to be default state.

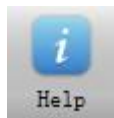


It can reset machine to click the button.



Power off

7.5 Help



User manual is located into the menu.