

PowerMonitor Guide

Table of contents

Get powerMonitor.....	1
Connect to PC.....	1
Install the corresponding driver.....	2
Open PowerMonitor.....	2
Select machine in PowerMonitor.....	3
Wait for a moment, PowerMonitor will work normally	5
Introduction of PowerMonitor.....	5

1. Get PowerMonitor

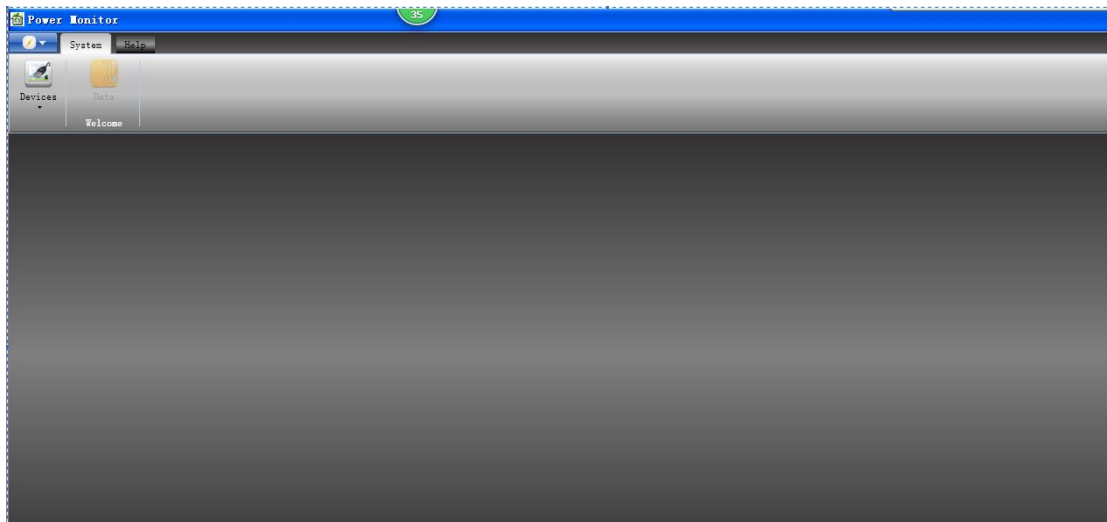


- Download it from website.
- Read it from CD-ROM.

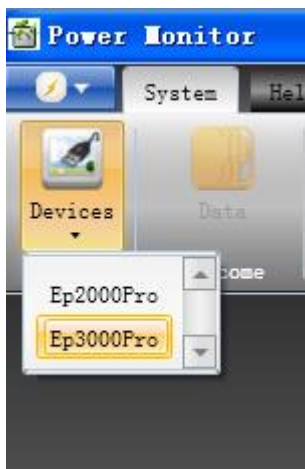
2. Connect to PC and machine.

3. Install the corresponding driver.

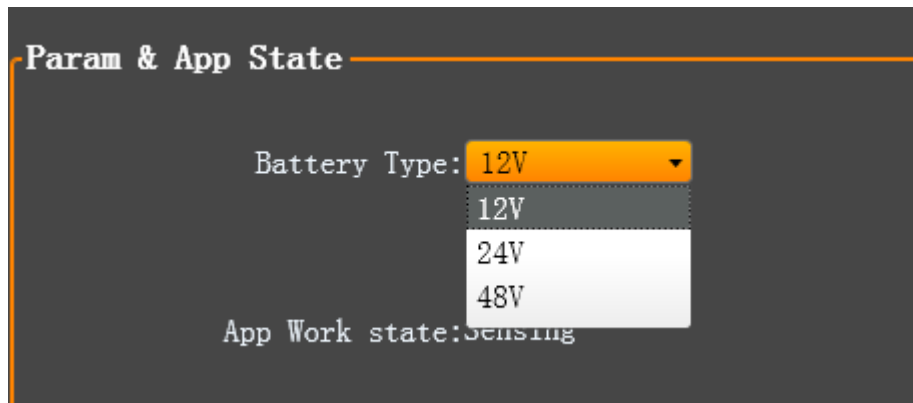
4. Open PowerMonitor.



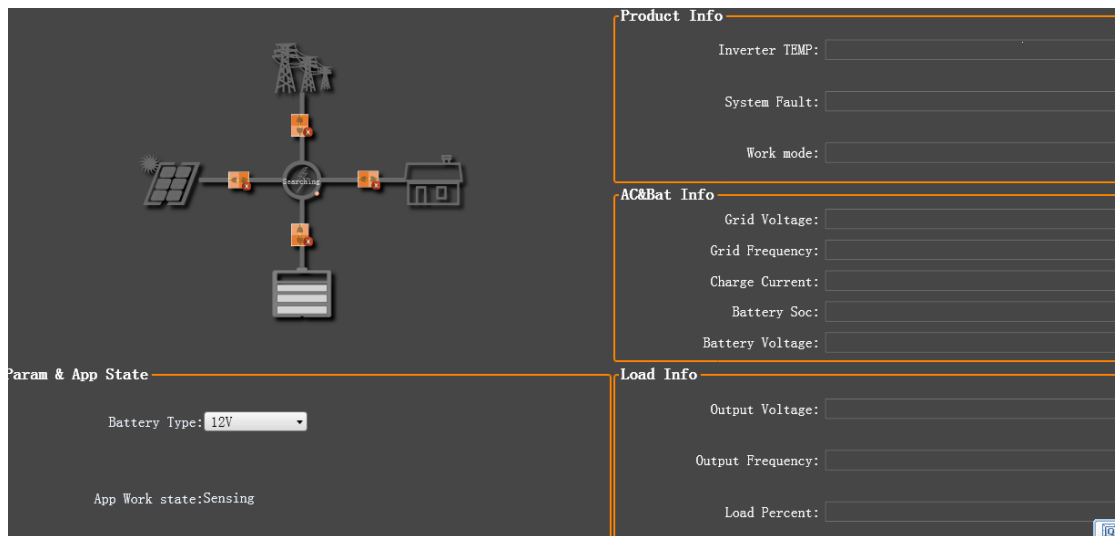
5. Select machine in PowerMonitor



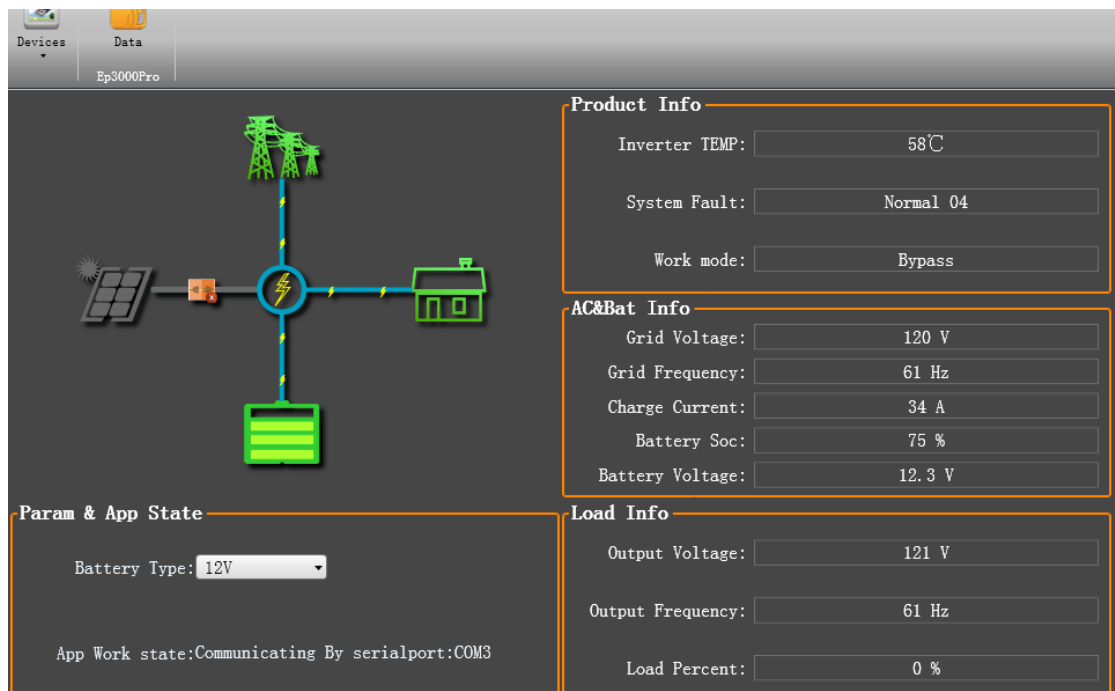
6. Select battery voltage (12V/24V/48V)



7. The PowerMonitor will scanning communication port.



8. Wait for a moment, PowerMonitor will work normally.



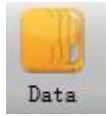
9. Introduction of PowerMonitor

9.1 Devices



According to your machine , Select the corresponding type.

9.2 Data



One record is saved every 5 minutes, and max records number is up to 60 thousands.

Ep3000

Clear Export

Id	Grid Voltage	Grid Frequency	Output Voltage	Output Frequency	Battery Voltage	Battery Soc	Temp	Abnormity	Status	RecordTime
1	120	61	121	61	12.2	71	58	Normal 04	NORMAL Line-Interactive Beeper On	2/18/2017 8:21:52 AM
2	120	61	121	61	12.2	71	54	Normal 04	NORMAL Line-Interactive Beeper On	2/18/2017 8:26:52 AM
3	120	60	121	60	12.3	75	56	Normal 04	NORMAL Line-Interactive Beeper On	2/18/2017 8:31:53 AM

9.3 Help

User manual is located into the menu.

